

ERG ELISpot Resource Group

ELISpot Workshop

Tuesday, June 12th 2018 | 9:00 am - 12:00 pm

Tulane University Primate Research Center
 Building 1 - Auditorium
 18703 Three Rivers Road
 Covington, LA 70433

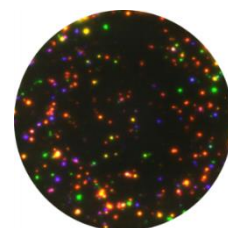


Topics include:

- | | |
|----------------|--|
| 9:00-10:00 am | <ul style="list-style-type: none"> Improved performance of T-cell, B-cell and monocyte Elispot assays New Elispot plates (including 384 well, strip and Fluorospot plates) Fluorospot for the polyfunctional assessment of cells (dual and triple cytokine/antibody secretion patterns) |
| 10:00-11:00 am | <ul style="list-style-type: none"> Sample preparation including options for preserving and restoring PBMC functionality, e.g., in multi-center trials and after prolonged storage Freezing and test media Automated cell counting and viability/apoptosis assessment |
| 11:00-12:00 pm | <ul style="list-style-type: none"> Innovative peptide and peptide pool formats, peptide stability and storage Evaluation guidelines for Elispot plates Statistical considerations and response definition Trouble Shooting for commonly seen problems Open discussion |

Presented by:

- Sylvia Janetzki, MD | ZellNet Consulting, Inc



Triple color FluoroSpot

Please register at: <http://zellnet.com/elispot/registration/>

Refreshments will be provided

Hosted by:



Tulane National Primate Research Center

YEARS OF RESEARCH EXCELLENCE