

ERG ELISpot Resource Group

ELISpot Workshop

Friday, March 24th 2017 | 9:30 am - 12:30 pm

La Jolla Institute for Allergy and Immunology
9420 Athena Circle
La Jolla, CA 92037
The Kimi and Teri Ishizaka Auditorium

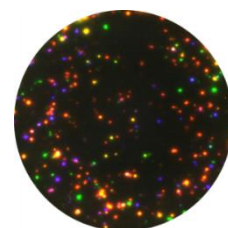


Topics include:

- | | |
|----------------|------------------------------------------------------------------------------------------------------------------------------------------------------------------------------------------------------------------------------------------------------------------------------------------------------------------------------------|
| 9:30-10:30 am | <ul style="list-style-type: none"> • Improved performance of T-cell, B-cell and monocyte Elispot assays • New Elispot plates (including 384 well, strip and Fluorospot plates) • Fluorospot for the polyfunctional assessment of cells (dual and triple cytokine/antibody secretion patterns) |
| 10:30-11:30 am | <ul style="list-style-type: none"> • Sample preparation including options for preserving and restoring PBMC functionality, e.g., in multi-center trials and after prolonged storage • Freezing and test media • Automated cell counting and viability/apoptosis assessment |
| 11:30-12:30 pm | <ul style="list-style-type: none"> • Innovative peptide and peptide pool formats, peptide stability and storage • Evaluation guidelines for Elispot plates • Statistical considerations and response definition • Trouble Shooting for commonly seen problems • Open discussion |

Presented by:

- Sylvia Janetzki, MD | ZellNet Consulting, Inc



Triple color FluoroSpot

Please register at <http://www.zellnet.com/registration>
Refreshments will be provided



Hosted by: